

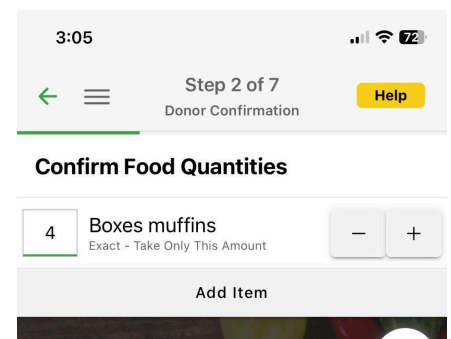
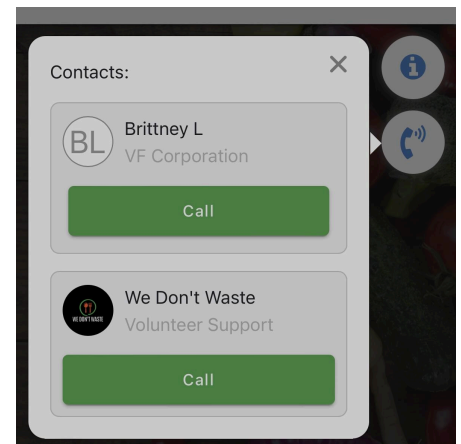
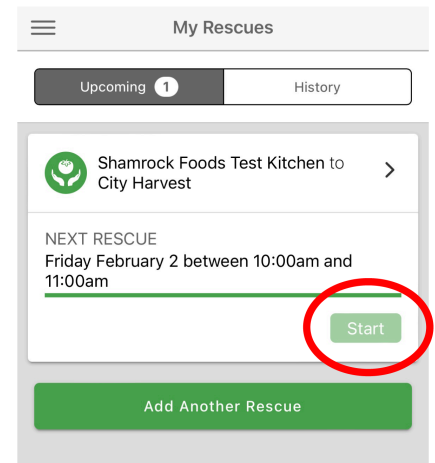


Tips & Tricks

A helpful guide for completing your next We Rescue run!

Completing a Rescue

1. We recommend always **calling the donor before you drive to the pickup location** to make sure there is a donation available.
2. **Always remember to select "Start"** before starting your rescue and track your progress as you complete the rescue. There are important instructions you will receive *at each stage* of your rescue.
3. **If you need assistance while completing your rescue**, please click the phone icon on your rescue screen to reach We Don't Waste's volunteer support.
4. Once you pick up the donation, you can confirm or adjust the size of the donation in the app using the +/- buttons
5. **You do not need to collect a signature from the recipient agency.** Feel free to skip this step!



WE RESCUE



WE DON'T WASTE

SAVING FOOD • PROTECTING THE PLANET • FEEDING PEOPLE

Unsure About Food Donation Guidelines?

Food donors are provided guidelines on what they can and cannot donate to the program. If you're wary of the food being fit for rescue, contact our We Rescue team at [720.943.2627](tel:720.943.2627).

Tag We Don't Waste on social media!

Facebook: [WeDontWasteDenver](#)

Instagram: [WeDontWaste](#)

LinkedIn: [WeDontWaste.org](#)

Have feedback on the app?

Contact the We Rescue team at WeRescue@WeDontWaste.org.

Are you involved in a food business that could benefit from food rescue?

Contact our food acquisition team at Food@WeDontWaste.org.